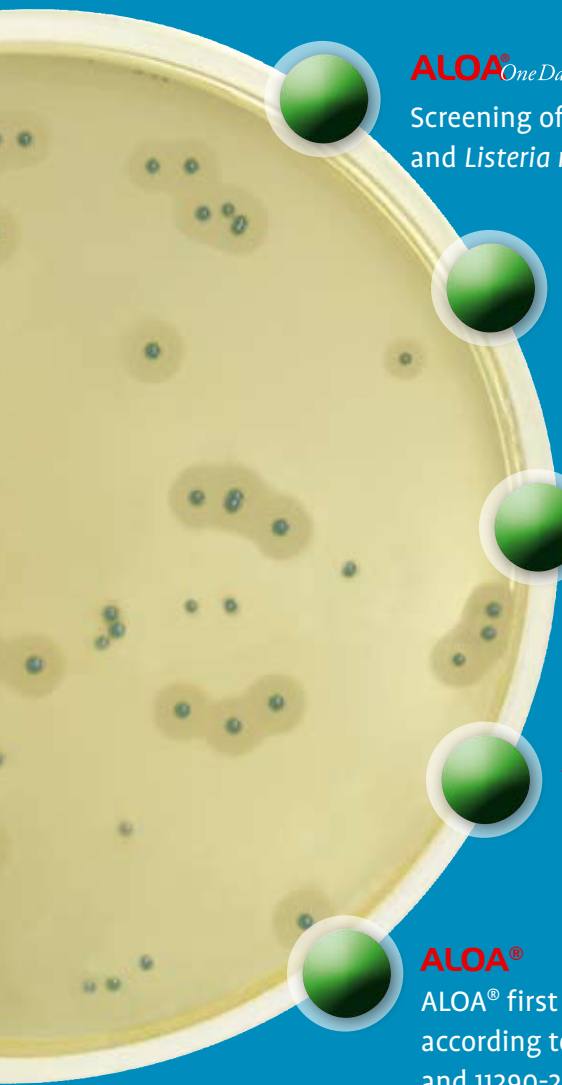


*Detection, enumeration
and confirmation of*
***Listeria spp. &
L. monocytogenes***



ALOA[®]*One Day*

Screening of *Listeria* spp.
and *Listeria monocytogenes*

ALOA[®]*Count*

Enumeration of
Listeria monocytogenes

ALOA[®]*Confirmation*

Confirmation of
Listeria monocytogenes

ALOA[®]

Listeria spp.
confirmation

ALOA[®]

ALOA[®] first isolation medium
according to EN ISO 11290-1
and 11290-2

*Experience
cannot be copied!*

**ISO 16140
Validation**

ALOA[®]

ALOA[®], manufactured by AES CHEMUNEX since 1997, is the chromogenic medium chosen for the creation of reference method EN ISO 11290.

ALOA[®] is a medium used for the screening of *Listeria* spp. and *Listeria monocytogenes* and enumeration of *L. monocytogenes* in food and environmental samples (ALOA[®]OneDay and ALOA[®]Count protocols).

- Simple protocol: 1 bag -1 plate
- Release of negative samples after 24 hours incubation on ALOA[®]OneDay

- ✓ FDA BAM
- ✓ ISO
- ✓ AFNOR
- ✓ CFSAN
- ✓ NORDVAL
- ✓ AOAC pending

ALOA[®] has become the mandatory medium of the ISO protocol (EN ISO 11290-1 and ISO 11290-2) for the screening and the enumeration of *L. monocytogenes*.

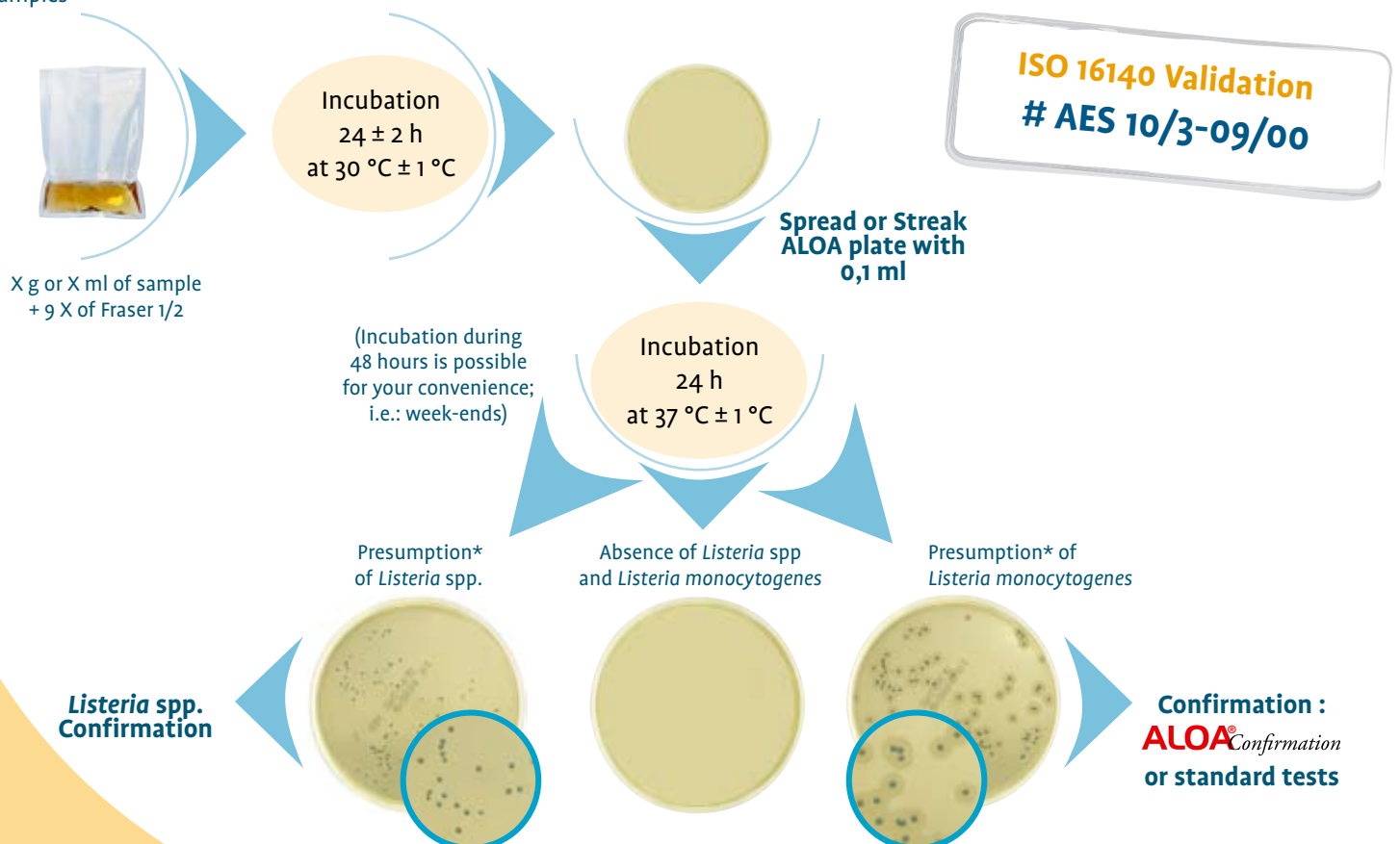
Listeria grow as blue-green regular round colonies (detection of β -glucosidase by using a specific chromogenic substrate with or without opaque halo).

Listeria monocytogenes show an opaque halo; this helps to easily differentiate them from other species of *Listeria*. The halo is due to the activity of a phospholipase involved in the infection process of pathogenic *Listeria*.

Listeria spp. and *L. monocytogenes* detection

ALOA[®]OneDay

ISO 16140 validation for food and animal feeding and environmental samples



* According to AFNOR certification, all positive samples have to be confirmed

Enumeration of *Listeria monocytogenes*

ISO 16140 validation for all food and animal feeding samples

ALOA[®]Count



X g or X ml of sample + 9 X of buffered peptone water

Revitalisation
1 h ± 5 min
at 20 °C ± 2 °C

ISO 16140 Validation
AES 10/3-09/00

AFNOR
Validation

Spread plate

Spread:

- For a result < 100 CFU/g:
0,1 ml on plate **ALOA[®]** Ø 90 mm
- For a result < 10 CFU/g:
1 ml on plate **ALOA[®]** Ø 140 mm
or 1 ml on 3 plates **ALOA[®]** Ø 90 mm

Pour plate

Pour 1 ml in about 15 ml **ALOA[®]** agar cooled at 47 °C ± 2 °C (for a result < 10 CFU/g)

Incubation
48 h
at 37 °C ± 1 °C

• Absence of typical colonies
<10 or 100 CFU/g

• Presence of typical colonies
presumption of *Listeria monocytogenes*

Confirmation :
ALOA[®]Confirmation
or standard tests

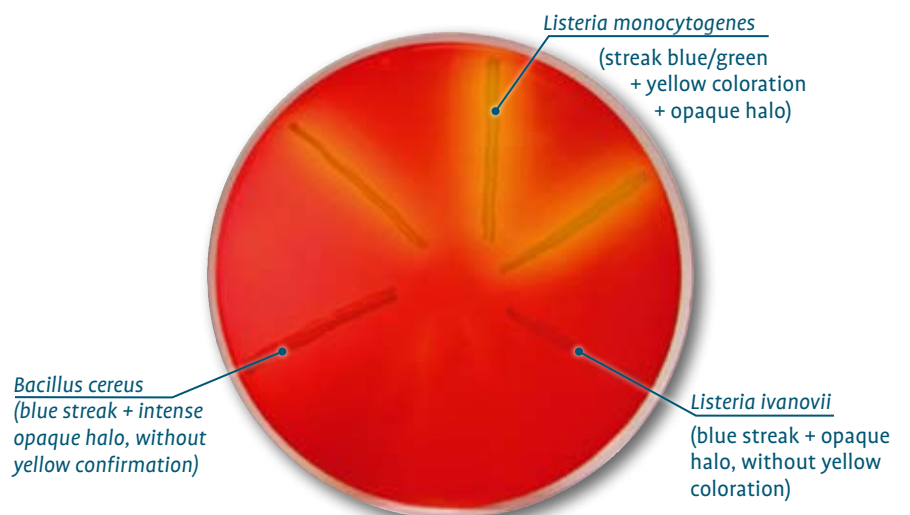
Confirmation of *Listeria monocytogenes*

ALOA[®]Confirmation

ALOA[®]Confirmation is the confirmation method of *Listeria monocytogenes* after detection by **ALOA[®]OneDay** or enumeration by **ALOA[®]Count**

- Confirmation from a single typical colony
- Inoculation by single streak
- Up to 6 confirmations per plate
- Results within 24 hours only

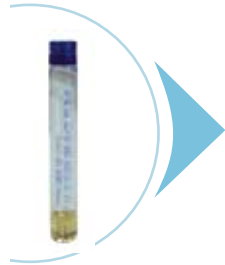
Any positive sample detected by the **ALOA[®]OneDay** method, then confirmed with **ALOA[®]Confirmation** do not need to be confirmed after enumeration.



Listeria spp. confirmation

AES CHEMUNEX introduces 2 confirmatory tests for *Listeria* spp. confirmation with **ALOA[®]OneDay** method.

5 hour protocol



Subculture one *Listeria* spp. presumptive colony in 1 ml of BHI broth

Incubation
5 h at 30 °C ± 1 °C

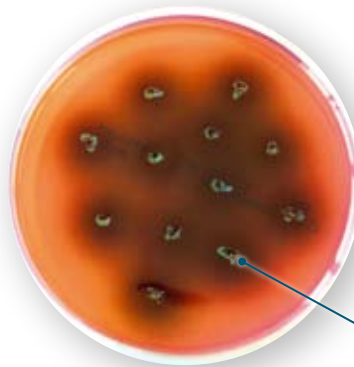
(incubation can be extended up to 24 hours)



Use the *Listeria* spp. confirmation strip, 10 to 20 minutes

24 hour protocol

- Incubation 24 hours at 37 °C
- Cost effective method : up to 12 confirmations per plate
- Confirmation from one single typical colony
- Inoculation by prick



Listeria spp.
(greenish colony with black halo)

Ordering Information

ALOA[®]OneDay

AEB520080: 20 plates Ø 90 mm
AEB520079: 120 plates Ø 90 mm
AEB120082: 10 plates Ø 140 mm
AEB720088: ALOA One Day[®] - Dehydrated kit for 20 analysis (ALOA[®] plates + dehydrated 1/2 Fraser)
AEB720089: ALOA One Day[®] - Dilubag[®] kit 120 analysis (ALOA[®] plates + 1/2 Fraser in Dilubag[®])
AEB720090: ALOA One Day[®] - Bottles kit for 120 analysis (ALOA[®] plates + 1/2 Fraser in bottles)

ALOA[®]Count

AEB620088: ALOA Count[®] (bases + supplements)
5 x 180 ml base + supplements

Confirmations

- *Listeria monocytogenes* :
AEB120100 : 10 plates ALOA Confirmation[®] 90 mm
- *Listeria* spp. :
AEB110101 : 20 tubes BHI 1 ml
AEB400050 : listeria spp confirmation strip
AEB522050 : 20 plates PALCAM 90 mm

Broths

- Bottles packaging:
AEB610419L: 1/2 Fraser, 6 bottles 900 ml
AEB610418: 1/2 Fraser, 6 x 225 ml
AEB610309L: BPW, 6 x 900 ml
AEB610308 : BPW, 6 x 225 ml

- Pouches packaging:
AEB910303/4: BPW, Dilubag[®] 3 liters x 4
AEB910305/2: BPW, Dilubag[®] 5 liters x 2
AEB910913/4: 1/2 Fraser, Dilubag[®] 3 liters x 4
AEB910915/2: 1/2 Fraser, Dilubag[®] 5 liters x 2



- Dehydrated packaging
- Half Fraser
AEB140412: 1/2 Fraser, 500 g
AEB140413: 1/2 Fraser, 5 kg
AEB140417: 1/2 Fraser, 10 kg
AEB110425S: supplement for Fraser, 5 tubes of 10 ml

- Buffered Peptone Water
AEB240309: QS for 9 liters
AEB140302 : 500g
AEB140303 : 5 kg
AEB140307 : 10 kg



www.aeschemunex.com

ISO 9001: v 2008
LRQA FAQ 9914921

AES CHEMUNEX France
(Headquarters)
Rue Maryse Bastié
Ker Lann CS17219
35172 Bruz cedex
Tel.: +33 2 2350 1212
Fax: +33 2 2350 1200

AES CHEMUNEX France
(R&D Rapid Microbiology)
Immeuble Paryseine
3, allée de la Seine
94854 Ivry-sur-Seine
Tel.: +33 (0)1 49 59 2000
Fax: +33 (0)1 49 59 2001

AES CHEMUNEX Inc USA
301 N. Harrison Street
Suite 109
Princeton NJ 08540
Tel.: +1 609 235 9272
Fax: +1 609 235 9298

AES CHEMUNEX UK
Endeavour House
3rd floor • London
Stansted Airport
Essex • CM24 1SJ
Tel.: +44 (0)1279 666 356
Fax: +44 (0)1279 666 357

AES CHEMUNEX Germany
Wilhelmstraße 49
D74918 Angelbachtal
Tel.: +49(0)7265 9179 10
Fax: +49(0)7265 9179 15

AES CHEMUNEX Spain
Pol. Ind. Santa Margarida II
C/ Albert Einstein, 44
08223 TERRASSA
(Barcelona)
Tel: +34 93 785 36 27
Fax: +34 93 784 72 63

AES CHEMUNEX Italy
Via Panà, 56/b
35027 NOVENTA PADOVANA
(PD)
Tel.: +39 049 87 05 804
Fax: +39 049 87 09 691