

# Detection & Confirmation

**sms**<sup>®</sup>  
Simple Method  
**Salmonella**

## high-throughput screening

- Release of negative samples within 44 hours maximum (enrichment included)
- Presumptive positive samples within 30 to 44 hours (enrichment included)
- Confirmation in 5 or 24 hours
- ISO16140 Validation
- Easy-to-use
- Extended Shelf life (up to 6 months in ISO-validated bottle packaging)
- Validated for food stuffs, animal feeding stuffs and environmental samples

### SMS Confirmation<sup>®</sup>

AES CHEMUNEX introduces two confirmatory *Salmonella* tests. (extended ISO16140 validation)

#### 5 hour protocol



Subculture the sample from SMS<sup>®</sup> in a 3 ml AES CHEMUNEX BHI broth.

#### Incubation

**5 ± 1 h at 37 ± 1°C**  
(with non-detrimental extended incubation up to 24 hours possible)



AES CHEMUNEX latex agglutination test.

#### 24 hour protocol

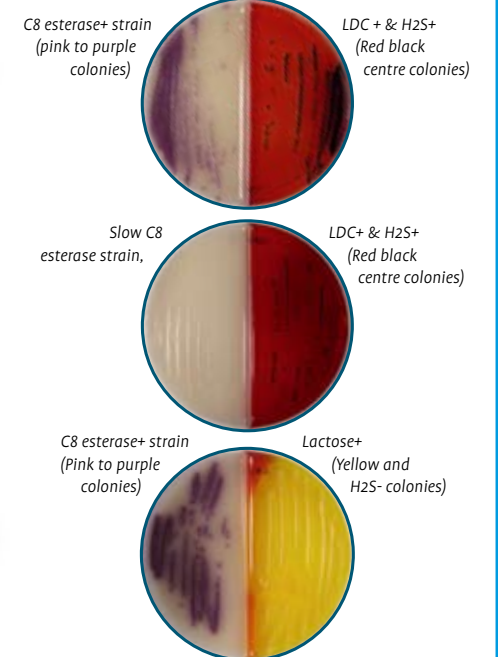


Subculture the sample from SMS<sup>®</sup> onto a bi-plate SALSA<sup>®</sup>

#### Incubate SALSA<sup>®</sup>

**24h ± 2h at 37°C ± 1°C**

#### Salmonella Characteristic profiles:



AES CHEMUNEX latex agglutination test, from a single typical colony



Broth preparation and dispensing at a low cost (dehydrated medium + automated media preparator). Production totally adapted to your needs. More information on [www.masterclave.com](http://www.masterclave.com)



#### Ordering information :

AEB520069 SMS<sup>®</sup> 120 plates 90mm  
AEB620067 SMS<sup>®</sup> 6 bottles 200ml (72 tests)  
AEB125980 SALSA<sup>®</sup> 10 bi-plates 90mm  
AEB110103 BHI broth (100 tubes of 3 ml)  
MGNF2 *Salmonella* spp. latex agglutination test. (50 tests)

#### Kits SMS<sup>®</sup>/Buffered Peptone Water

AEB720189 Kit SMS<sup>®</sup> /Dilubag<sup>®</sup> (120 plates+ 3x5L+ 1x3L)  
AEB720190 Kit SMS<sup>®</sup> /bottles (120 plates + 120x225ml)

#### Buffered Peptone Water

AEB910303 Dilubag<sup>®</sup> 3 litres  
AEB910305 Dilubag<sup>®</sup> 5 litres  
AEB610308 6 bottles 225 ml  
AEB610309L 6 bottles 900 ml  
AEB240309 Quantity for 9 litres  
AEB240318 Quantity for 18 litres  
AEB140302 500 g  
AEB140303 5 kg



**AES CHEMUNEX France**  
(Headquarters)  
Rue Maryse Bastié  
Ker Lann CS17219  
35172 Bruz cedex  
Tel.: +33 2 23 50 12 12  
Fax: +33 2 23 50 12 00

**AES CHEMUNEX, Inc USA**  
301 N. Harrison Street Suite 109  
Princeton NJ 08540  
Tel.: +1 609 497 0166  
Fax: +1 609 497 7307

**AES CHEMUNEX UK**  
Endeavour House  
3<sup>rd</sup> floor • London  
Stansted Airport  
Essex • CM24 1SJ  
Tel.: +44 (0)1279 666 356  
Fax: +44 (0)1279 666 357

**AES CHEMUNEX Germany**  
Wilhelmstraße 49  
D74918 Angelbachtal  
Tel.: +49(0)7265 9179 10  
Fax: +49(0)7265 9179 15

**AES CHEMUNEX Spain**  
Pol. Ind. SantaMargarida II  
C/ Albert Einstein,  
44 08223 TERRASSA (Barcelona)  
Tel: +34 93 785 36 27  
Fax: +34 93 784 72 63

**AES CHEMUNEX Italy**  
Via Panà, 56/b  
35027 NOVENTA PADOVANA (PD)  
Tel.: +39 049 87 05 804  
Fax: +39 049 87 09 691

[www.aeschemunex.com](http://www.aeschemunex.com)  
[contact@aeschemunex.com](mailto:contact@aeschemunex.com)



# sms<sup>®</sup> Simple Method **Salmonella**



# sms<sup>®</sup> Simple Method **Salmonella**

## Our Customers Speak :

## A true revolution !

Patented formula

- **sms<sup>®</sup>** is a method based on salmonella motility linked to specific colour change for an easy reading.
- No need of specific equipment.
- Immediate and non ambiguous reading even for low positive samples.
- Strain available on the plate for a new isolation and confirmation.
- **ISO 16140 validated method** for food and animal feeding stuff and environmental samples (detection and confirmation).



### sms<sup>®</sup> Salmonella detection method

Day 0 : Enrichment



25 g sample + 225 ml  
buffered peptone water

**Incubation 16 to 20 hours at 37 °C**

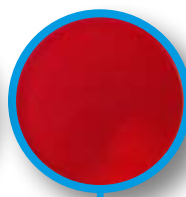
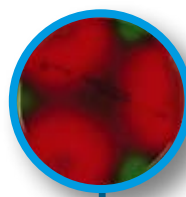
Day+1 : inoculation



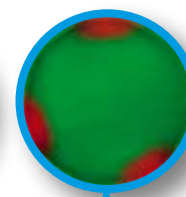
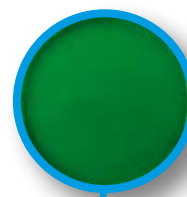
3 x 0,1 ml  
in 3 equidistant  
spots near the side  
of the Petri dish

**Incubation 14 to 24 hours at 41 °C**

Day+2 : Results



**Presumptive Positive:**  
migration area of at least 2 cm



**Negative:**  
absence of migration area or  
migration area of less than 2 cm

#### ■ Rosa GASOL

Director - APSALAB (Pintaluba Group) - Reus, Spain  
"Our laboratory checks the presence of Salmonella in animal feeding stuffs. SMS<sup>®</sup> is a rapid and easy-to-use screening method which is the most adapted to our laboratory workload. Moreover, SMS<sup>®</sup> is more sensitive than other rapid methods and is much more affordable."

#### ■ Christian GUIGNARD

Laboratory Manager - TRIBALLAT  
Noyal-sur-Vilaine, France  
"I have chosen the SMS<sup>®</sup> method because it is AFNOR/ISO 16140 validated for all foodstuffs and it is easy-to-use."

#### ■ Julien GUILLORY

TRANSAL Laboratory (Doux Group)  
La Vraie Croix, France  
"Since the withdrawal of the NF V08-052 routine norm, our laboratory has to be accredited according to ISO 6579 standard; we have chosen an AFNOR/ISO 16140 validated alternative method which is much faster than the reference one. SMS<sup>®</sup> is an easy-to-use, rapid and efficient method with a very good specificity."

#### ■ Lætitia JARNIER

Quality Assurance Manager  
Departmental Analysis Laboratory - Tulle, France  
"The Departmental Laboratory of Corrèze carries out microbiological controls for food manufacturers. We chose the SMS<sup>®</sup> method two years ago and obtained the COFRAC accreditation for this method. This technique provides fast results to our customers. We appreciate this product because it is reliable (we get good results in inter-laboratories tests) and easy to use."

#### ■ Carole LEMAITRE

Microbiology Laboratory Manager  
Albades Laboratory - Oraison, France  
"The routine use of the SMS<sup>®</sup> method has let our laboratory significantly save money and time. Results are given earlier especially in the case of presumptive positive samples that have to be confirmed (contrary to our previous method which didn't offer the possibility to re-isolate the bacteria). After a short training period, we are confident with the SMS<sup>®</sup> results."

#### ■ Juan S. VILLAR

Quality Director - APC Europe - Granoller, Spain  
"APC Europe is an ingredient manufacturer for food and animal feeding producers. We have decided to use SMS<sup>®</sup> in routine since the cost/reliability ratio is better than our previous ELISA method. We have been able to prove that the sensitivity and the reproducibility of SMS<sup>®</sup> are better since the analytical protocol requires only a few steps."